



Enriching Lives

Kirloskar Pumpset

Turning Desert to an Oasis...
Bringing Prosperity.... Always



YOUR RELIABLE PARTNER

Any part of the world, whatever your pumping needs, the most dependable and reliable diesel pumpset comes your way from Kirloskar.

An engineering enterprise for more than 100 years, combined with innovative technology and immense expertise, Kirloskar has been delivering its world-class products to Indian and global markets time and again.

Kirloskar diesel pumpsets too bear the mark of the same high quality and reliability that stands all tests, including the test of time.

From greening the sands in Egypt to increasing rice output in Laos, from operation in the remotest bush in Africa to farmlands in Latin and Central America, the sight of a Kirloskar Pumpset working continuously cannot be missed.

Being a factory-assembled pumpset, it is sturdy in build, correctly aligned thereby ensuring long life. Its design and engine-pump matching features ensure that the output capacity is maximum.

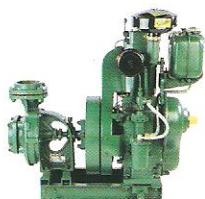
The best part is that the long life is perfectly complemented by low running and maintenance costs (Consumes less fuel & oil). Proof of this being a high population of pumpsets running tirelessly in many parts of the world.

Available in a vast range, you'll easily find the right pumpset to suit your requirement. So, look no further. Choose a Kirloskar pumpset and enjoy complete peace of mind.

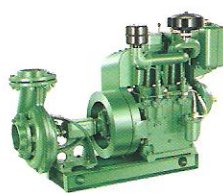
PUMPSET RANGE



AV1 XL/NW2M+



TAF1/NW4 +



TAF2 /NW9D



DM20 /NW10D



TAF1/SP3L +

PUMPSET SELECTION CHART

WATER COOLED						
ENGINE		PUMP		PUMPSET OUTPUT		
Model	HP / RPM	Model	Suc X Delivery (mm X mm)	Imp Dia mm	Discharge Range (Lit / Sec)	Head Range (Meters)
CENTRIFUGAL PUMPSETS						
AV1 XL	5.0 / 1500	NW2M+	80 X 80	223	22.0 - 13.0	12.0 - 17.5
		NW4	100 X 100	197	32.0 - 15.0	06.0 - 12.5
TV1	7.0 / 1500	NW4+	100 X 100	206	33.5 - 15.5	06.5 - 13.5
		NW9D	125 X 125	183	59.0 - 34.0	05.5 - 09.5
TV1	8.0 / 1800	NW1+	65 X 50	223	18.0 - 09.0	18.0 - 25.5
		NW2M+	80 X 80	212	25.5 - 15.0	15.5 - 23.0
		NW4+	100 X 100	188	37.0 - 17.5	08.0 - 16.5
DM10	10.0 / 1500	NW6D	80 X 80	295	17.0 - 10.5	26.0 - 29.0
		NW9D	125 X 125	198	69.8 - 36.0	06.0 - 12.0
TV2	16.2 / 1800	NW6D	80 X 80	288	20.0 - 12.0	35.5 - 40.0
		NW9D	125 X 125	195	76.0 - 41.0	09.0 - 16.0
DM20	20.0 / 1500	NW10D	125 X 125	260	55.0 - 44.0	15.0 - 21.5
		NW12D	150 X 150	242	90.0 - 55.0	06.0 - 17.0

AIR COOLED						
ENGINE		PUMP			PUMPSET OUTPUT	
Model	HP / RPM	Model	Suc X Delivery (mm X mm)	Imp Dia mm	Discharge Range (Lit / Sec)	Head Range (Meters)
CENTRIFUGAL PUMPSETS						
TAF1	6.0 / 1500	NW4+	100 X 100	201	32.7 - 15.0	06.0 - 13.0
		NW9D	125 X 125	177	57.5 - 32.0	05.0 - 09.0
TAF1	7.1 / 1800	NW1+	65 X 50	221	18.0 - 09.0	18.0 - 25.5
		NW2M+	80 X 80	203	24.0 - 14.0	14.0 - 21.0
		NW4+	100 X 100	184	26.0 - 16.5	07.5 - 15.5
TAF2	14.2 / 1800	NW6D	80 X 80	274	19.0 - 11.5	32.5 - 36.0
		NW9D	125 X 125	186	72.0 - 41.0	08.0 - 14.5
DA20	20.0 / 1500	NW10D	125 X 125	260	55.0 - 44.0	15.0 - 21.5
		NW12D	150 X 150	242	90.0 - 55.0	06.0 - 17.0
SELF-PRIMING PUMPSETS						
TAF1	6.0 / 1500	SP3L+	80 X 80	224	17.7 - 03.5	12.0 - 20.0
TAF2	12.8 / 1500	SP4L+	100 X 100	292	36.3 - 11.5	12.0 - 26.0



KIRLOSKAR OIL ENGINES LIMITED

Regd. & Corporate Office : Laxmanrao Kirloskar Road, Khadki, Pune - 411 003, India. Tel.: +91 20-2581 0341 Fax : +91 20-2581 3208

Plant At : 151, Talera Junction, Pune Saswad Road, Fursungi, Pune 412308 India.

Website : www.kirloskar.com Email : exports@kirloskar.com

AUTHORISED DEALER

Enriching Lives

(As continuous improvements are contemplated, the descriptions and illustrations are not binding.)

© This catalogue is copy righted and may not be produced in any form not even parts of it, without previous written permission by copyright owners, Kirloskar Oil Engines Limited